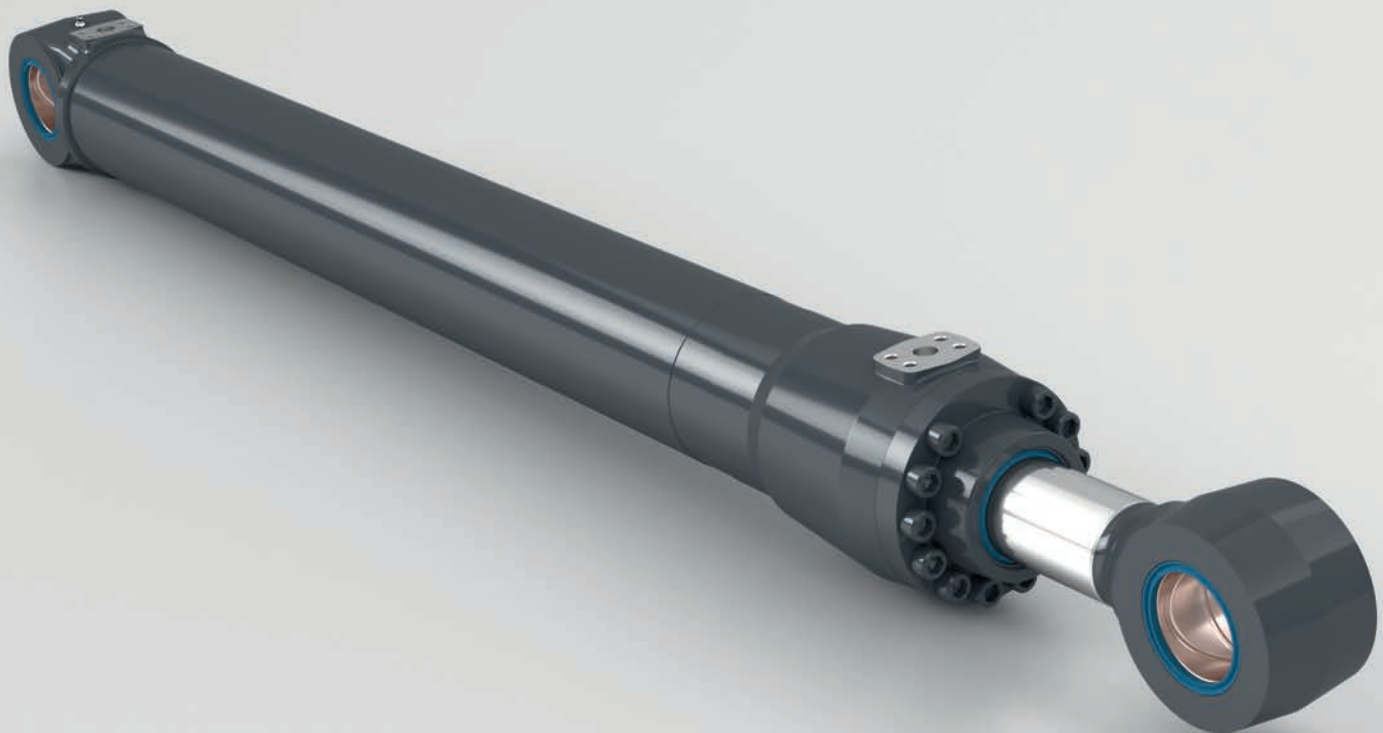


### Hydraulic cylinders for excavators and material handlers

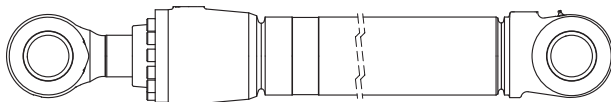
- Boom
- Elbow
- Arm
- Bucket
- Stabilizer
- Blade
- Axle Lock
- Cabin Lift
- Thumb



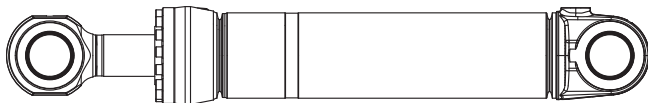
Please scan with your mobile device for further information.



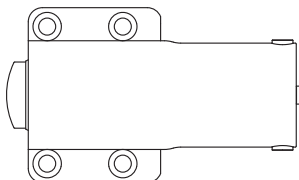
Boom  
Arm  
Bucket



Elbow



Axle Lock



### Pacoma standard parameters

Closed length:	up to 3000 mm
Stroke:	up to 2500 mm
Piston diameter:	up to 260 mm
Piston rod diameter:	up to 120 mm
Operating pressure:	up to 360 bar
Temperature range:	-25°C to 80°C
Durability:	> 2.000.000 cycles
Cushioning:	application-optimized cushioning characteristic (rod and bottom side)
Seal system:	protected against dieseling, low friction, no stick-slip-effect
Bearings:	hardened steel or bronze bearings
Maintenance:	easy and quick by form-fit piston fixation (low torque) – LIRE
Installation:	fix points, oil ports, grease nipples according to customer request
Paint:	high solid coating in any RAL color and levels
Special Features:	stroke measurement systems, integrated valves, external fluid lines, brackets

Other parameters are available on demand.

### Europa/Deutschland

Pacoma GmbH  
Königsberger Straße 12  
D-37269 Eschwege  
info@pacoma.com  
[www.pacoma.com](http://www.pacoma.com)

### China/Fenghua

Pacoma China  
Hydraulic Equipments Co., Ltd  
No. 18 Xiaowangmiao Section Jiang Ba Line  
Fenghua, Zhejiang Zip Code 315500  
info.cn@pacoma.com